



# 6363 WOODWAY

HOUSTON, TEXAS

## EXCELLENT LOCATION

6363 Woodway is an 11-story Class "A" building located one block east of Voss Road in the prestigious Woodway/Voss submarket. It's wooded location between The Galleria, the 610 Loop, I-10, US 59, the Sam Houston Tollway & the Westpark Tollway make 6363 Woodway the perfect address for companies on-the-go.



## BUILDING AMENITIES

- Located on Woodway Drive, one block east of Voss Road – only minutes from The Galleria, I-10, Beltway 8, and the Westpark Tollway
- Near the prestigious neighborhoods of Tanglewood, Memorial, Briargrove, and The Villages
- 198,247 SF – 11 stories
- Across the street from Houston's premier Second Baptist Church
- Garage parking with covered building entry
- Covered visitor parking
- Card-key garage and building access
- Frost Bank on site, ATM and Bank Drive-thru
- Deli
- Walking distance to quality shopping & retail
- Updated interiors

For more information, contact:

**:: STEVE ROCHER**  
713.577.1615  
steve.rocher@cbre.com

**:: KRISTEN RABEL, CCIM**  
713.577.1644  
kristen.rabel@cbre.com

Professionally managed by



**CBRE**  
CB RICHARD ELLIS



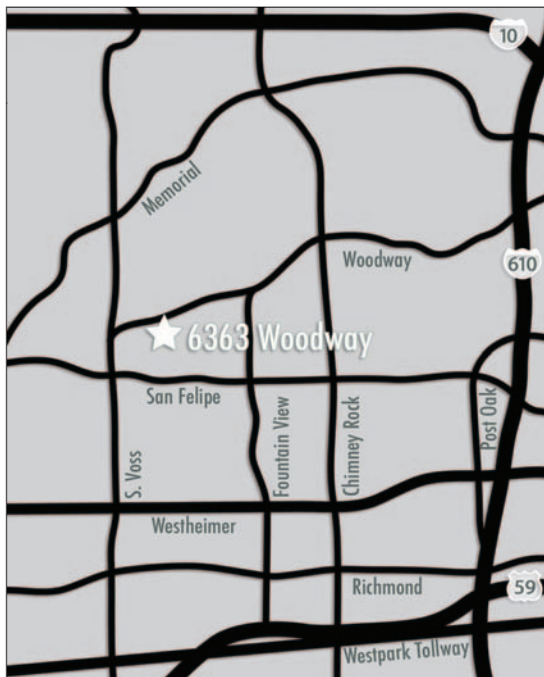
# 6363 WOODWAY

HOUSTON, TEXAS

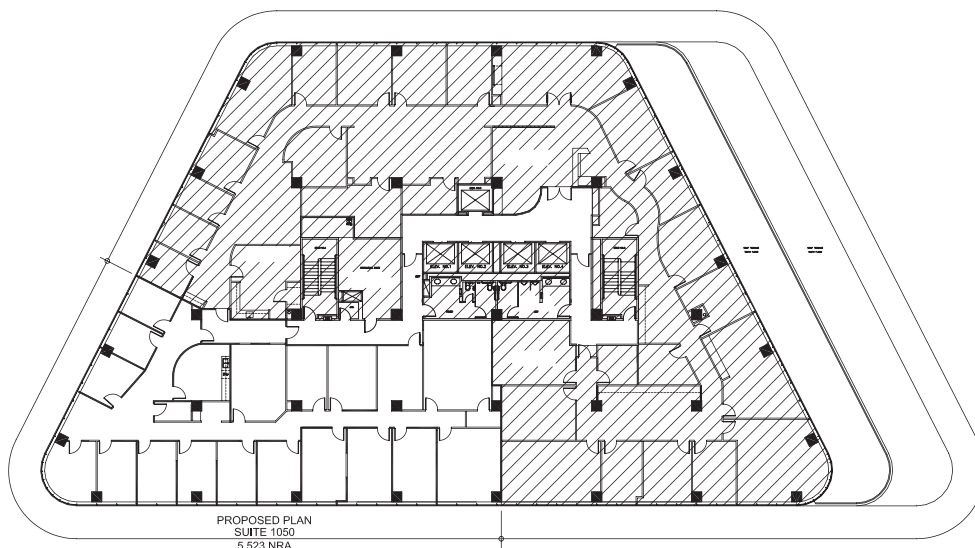
Professionally managed by



## :: AREA MAP



## :: TYPICAL FLOOR PLAN



PROPOSED PLAN  
SUITE 1050  
5,523 NRA

For more information, contact:

:: **STEVE ROCHER**  
713.577.1615  
steve.rocher@cbre.com

:: **KRISTEN RABEL, CCIM**  
713.577.1644  
kristen.rabel@cbre.com

**CBRE**  
CB RICHARD ELLIS