

# 7700 SAN FELIPE

HOUSTON, TEXAS

OFFICE SPACE AVAILABLE FOR IMMEDIATE OCCUPANCY



## FEATURES

- Located one block west of San Felipe and Voss - only minutes away from the Galleria, I-10, Beltway 8, and the Westpark Tollway
- 100,716 square feet - 5 stories
- Ample parking garage with covered building entry
- Building conference room
- Walking distance to quality shopping and fine restaurants

**FOR MORE  
INFORMATION  
PLEASE  
CONTACT**

**Kristen Rabel, CCIM**  
Vice President  
713.577.1644  
kristen.rabel@cbre.com

**Steve Rocher**  
Senior Vice President  
713.577.1615  
steve.rocher@cbre.com

**Louann Pereira**  
Associate  
713.577.1613  
louann.pereira@cbre.com

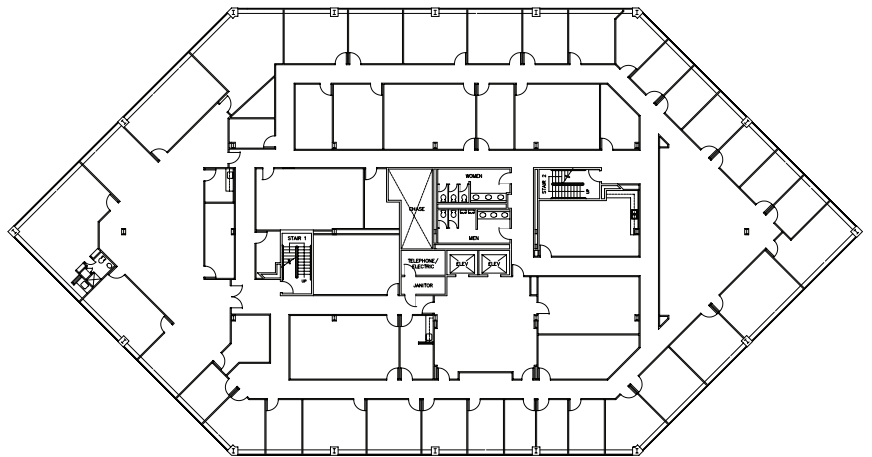
**CBRE**  
CB RICHARD ELLIS

# 7700 SAN FELIPE

HOUSTON, TEXAS



## TYPICAL FLOOR PLAN



Professionally Managed By:



©2009, CB Richard Ellis, Inc. We obtained the information above from sources we believe to be reliable. However, we have not verified its accuracy and make no guarantee, warranty or representation about it. It is submitted subject to the possibility of errors, omissions, change of price, rental or other conditions, prior sale, lease or financing, or withdrawal without notice. We include projections, opinions, assumptions or estimates for example only, and they may not represent current or future performance of the property. You and your tax and legal advisors should conduct your own investigation of the property and transaction. Printed in USA, 04/09 HOU0002031

**FOR MORE  
INFORMATION  
PLEASE  
CONTACT**

**Kristen Rabel, CCIM**  
Vice President  
713.577.1644  
kristen.rabel@cbre.com

**Steve Rocher**  
Senior Vice President  
713.577.1615  
steve.rocher@cbre.com

**Louann Pereira**  
Associate  
713.577.1613  
louann.pereira@cbre.com

**CBRE**  
CB RICHARD ELLIS